

WebVue HMI WEB CLIENT



WebVue

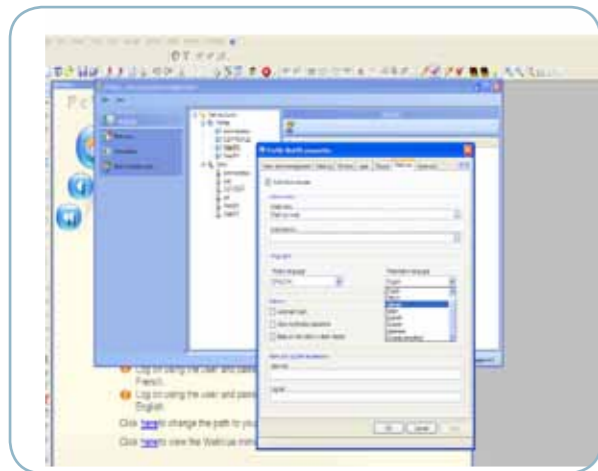
Remote Access at Lower Cost

WebVue is an ideal solution for remote maintenance and remote monitoring. Using an ordinary browser, it enables you to display and control your process remotely across an Internet or intranet network without prior installation.

Security Management

The PcVue Web Server station uses Microsoft® IIS technology to manage security jointly with the enterprise firewall.

Through management of user rights and authentication processes you can access in polling mode the real-time values of PcVue's variables and lists of alarms, historical data, etc. Those exchanges are based on XML/SOAP via HTTP protocol or HTTPS for encrypted data exchange (SSL V2).

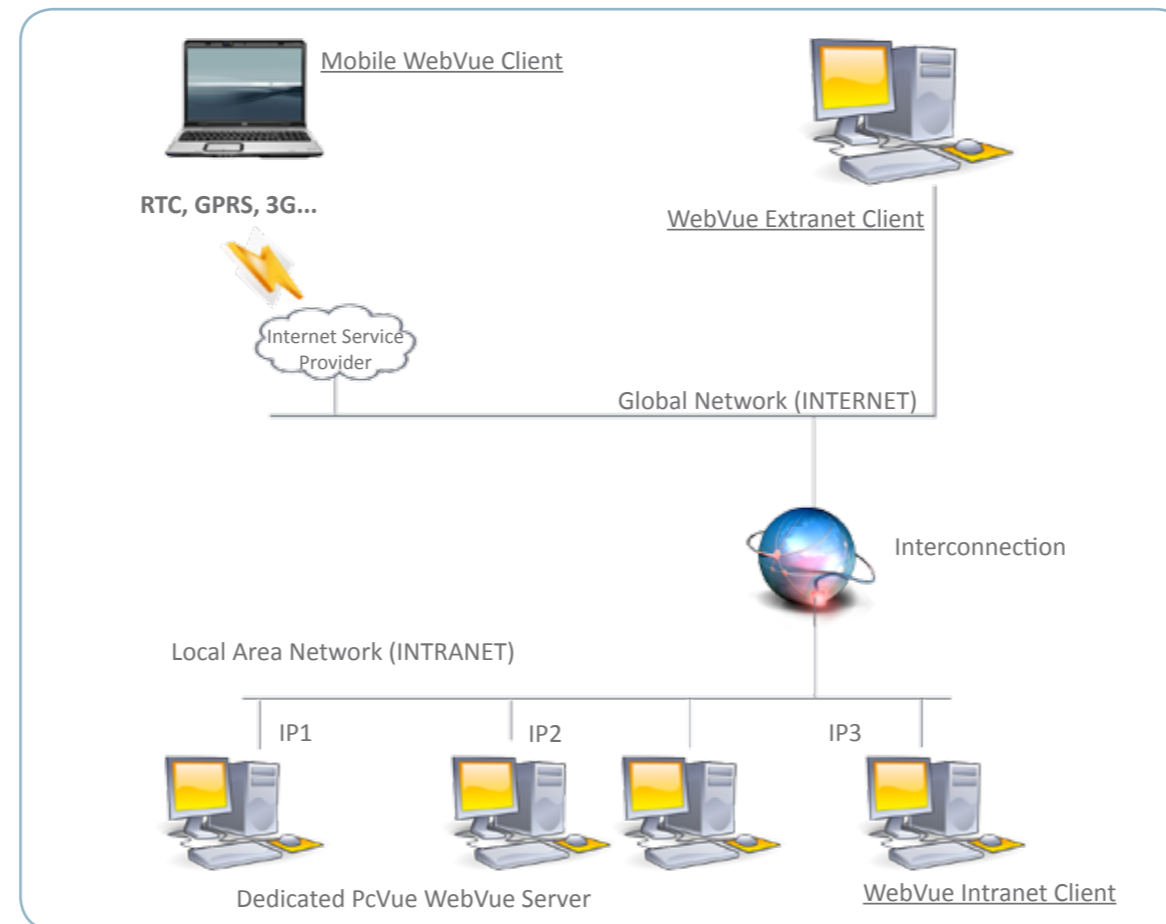


FROM ANY OPERATING SYSTEM, WEBVUE SUPPORTS:

- Display of PcVue mimics specifically designed for Web-based use
- Alarm lists and acknowledgement

FROM ANY OPERATING SYSTEM, WEBVUE SUPPORTS:

- Viewing of Historical and Real time trend curves
- Viewing of Historical Event Log lists
- Issuing of commands across your installation



Java Applet

WebVue has two components: an applet that is held on the Web Clients and a Server that provides the mimics and data from a dedicated PcVue application. The PcVue Server provides the Web browser on the Web Client station with an HTML startup page and all of the basic Java classes for the WebVue applet.

As soon as it is loaded, the WebVue applet:

- Connects to the server via a TCP/IP connection.
- Authenticates the user.
- Downloads the required mimic.
- Updates graphic elements of the mimic dynamically from the PcVue Server.
- Supports navigation among the application's mimics.
- Authorizes acknowledgement of alarms, the issuing of remote commands and remote logging within the scope of the users' rights.



Web Services

When creation of a Web portal to a factory site or a gateway dedicated to a specific application is required, PcVue provides, through an IIS server, various public Web services allowing authorized users to make use of the information placed at their disposal. Using these services, fixed or mobile terminals can access the real-time values of PcVue's variables and lists of alarms, historical data, etc.

To support those exchanges, five classes of service can be called from PcVue's Web Services interface. These are based on XML/SOAP via HTTP protocol or HTTPS for encrypted data exchange (SSL V2). The classes handle session management (safety, authentication etc.) and access to real time data, alarms (creation, subscription to lists etc.), event logs (process events, user actions, logins etc.) and historical trends (changes of values etc.). Access to the PcVue Server can be achieved as a .Net remote Client in either polling or event-driven mode.



Your Independent Global SCADA provider



ARC Informatique
Headquarters and Paris office

2 avenue de la Cristallerie
92310 Sèvres - France

tel + 33 1 41 14 36 00
fax + 33 1 46 23 86 02
hotline: +33 1 41 14 36 25

arcnews@arcinfo.com
www.pcvuesolutions.com

Find your regional contact at:
www.pcvuesolutions.com



ISO 9001 and ISO 14000 certified.

© Copyright 2013. All rights reserved.
All names and trademarks are the property of their
respective owners.

Publication number: EN-13-10-21